

How is Asthma Treated?

Once you are diagnosed with asthma, it is important to work closely with your healthcare provider to control your asthma. This fact sheet describes commonly used asthma medicines and other actions you can take to control asthma.

Your Asthma Action Plan

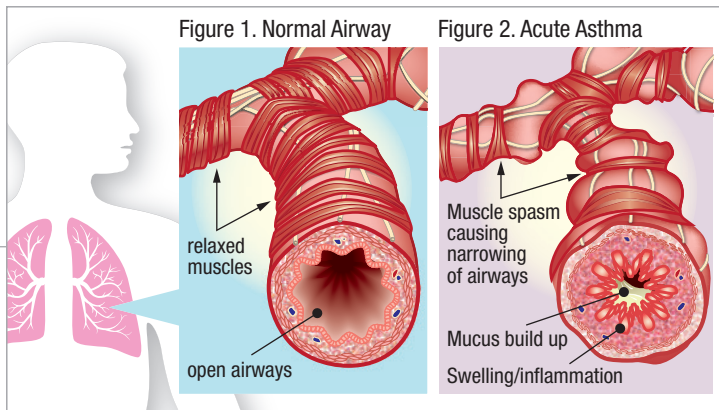
An Asthma Action Plan is a tool that you and your healthcare provider develop to help you manage your asthma. It will list your medicines, when you should take them, and how to monitor your breathing and asthma control.

With asthma, there are two main problems: swelling (inflammation) of the airways, and tightening of the muscles around the airways (bronchoconstriction). Different medicines used to control asthma are designed to address both of these issues, making it easier to breathe. These medicines come in multiple forms, including inhalers, pills, and injections (shots). It is important to use your medicines exactly as instructed by your healthcare provider. You will be given a “rescue” inhaler (see below), and your healthcare provider will help you decide if you need any other types of medicine for your asthma.

Inhaled medicines

These most often come in the form of inhalers (sometimes called puffers), which release a dose of medicine to breathe in when you activate them. Inhaled medicine may also be given using a machine called a nebulizer, which turns liquid medication into a mist that you inhale. It is important for you to review with your healthcare provider or pharmacist the correct way to use each medicine. Remember to rinse your mouth after each use of inhalers that contain inhaled steroids.

- **Short-acting inhaled medicines**—also known as rescue or quick relief inhalers
Short-acting medicines for asthma are bronchodilators that relax the muscles around the airways. The most common types are the short-acting beta agonists, albuterol or levalbuterol. A



second type is the short-acting anti-cholinergic medicine ipratropium, which is often paired with another medicine. When used correctly, they usually start to work within 10 minutes to improve your breathing. You should keep one of these inhalers with you at all times.

- **Long-acting inhaled medicines**—It is important to work closely with your provider regarding the most appropriate frequency of long-acting inhaled medications for you, based on the severity and characteristics of your asthma. These are sometimes called controller medications. They work over time to keep your airway swelling (inflammation) and tightening under good control long-term.
 - ◆ **Inhaled steroids**
These treat swelling (inflammation) in the airways and keep the airways open. Examples: beclomethasone, budesonide, ciclesonide, flunisolide, fluticasone, mometasone.
 - ◆ **Long-acting bronchodilators**
These come in two categories:
 - Long-acting beta agonist—Used together with inhaled steroids to keep the airways open and improve asthma control. Examples: salmeterol, formoterol, vilanterol.
 - Long-acting anticholinergic—May be added for better control of asthma, to relax the muscles around the airways and decrease mucus production. Example: tiotropium.

Oral (pill) medications

- Leukotriene modifying medications may be used in addition to your inhaled medications, particularly if you have allergies. They do not work quickly and should not replace your inhaler(s). Examples: montelukast, zafirlukast, zileuton.
- Oral steroids, most commonly prednisone, may be used to treat a flare of your asthma, in order to reduce the swelling in your airways that makes it hard for you to breathe.

Injections

If your asthma is not well controlled using inhaled and oral medications, your asthma specialist may recommend additional medicines. These medicines affect parts of your immune system that may be contributing to your asthma symptoms. They are selected based on test results. Examples of these medicines include omalizumab, benralizumab, mepolizumab, and dupilumab.

Besides medicines, what else can I do to help control my asthma?

Taking an active role in the management of your asthma by partnering with your healthcare provider will help you to breathe easier. It is important to follow your asthma action plan and take your medicines as prescribed. There are other things you can do to help manage your asthma. These include:

- Thinking about your environmental triggers
- Avoiding irritants like tobacco smoke or vape
- Managing your allergies

Irritants and Triggers

Identify which exposures and experiences seem to trigger your asthma so that you can avoid them when possible. It may be helpful to keep a journal of your activities and symptoms to help find patterns. It is very important to avoid exposure to or stop any smoking or vaping.

Lifestyle

Regular exercise is an important part of managing your asthma and staying healthy. It can also help to decrease stress. Talk to your healthcare provider about how to exercise safely with asthma. You may also consider learning more about ways to control any excess stress, as stress can contribute to your asthma symptoms.

Vaccinations

Get a flu shot (vaccine) every year to prevent the flu or reduce the severity of the flu. You may also ask

your healthcare provider if a pneumococcal vaccine to prevent a type of bacterial pneumonia is right for you.

Authors: Lynn Fussner, MD, Carmen Mikacenic, MD, Tamas Dolinay, MD, Benjamin Suratt, MD

Reviewers: Jean-Marie Bruzzese, PhD, Maureen George, MSN, PhD, Marianna Sockrider, MD, DrPH.

Rx Action Steps

- ✓ Talk to your asthma specialist or primary healthcare provider to develop an Asthma Action Plan.
- ✓ To get the most benefit from your inhalers, be sure that you are using them correctly. Show your healthcare provider and/or pharmacist how you use them to get feedback.
- ✓ Keep a rescue inhaler with you at all times.
- ✓ Know your asthma triggers and take steps to minimize exposure to them.
- ✓ See your healthcare provider regularly. Ask how often you need to follow-up. Asthma visits may include breathing tests, reviewing your Action Plan, and making sure you are up to date on vaccines.

Healthcare Provider's Contact Number:**Resources****American Thoracic Society**

- www.thoracic.org/patients/
 - Using your Metered Dose Inhaler
 - Quick-relief Bronchodilators
 - What is Asthma?
 - Asthma and Exercise

National Heart, Lung, & Blood Institute (NHLBI)

- <http://www.nhlbi.nih.gov/health/health-topics/topics/asthma/>

American Lung Association (ALA)

- <http://www.lung.org/lung-disease/asthma/>

Asthma and Allergy Foundation of America

- www.aafa.org

This information is a public service of the American Thoracic Society. The content is for educational purposes only. It should not be used as a substitute for the medical advice of one's healthcare provider.

