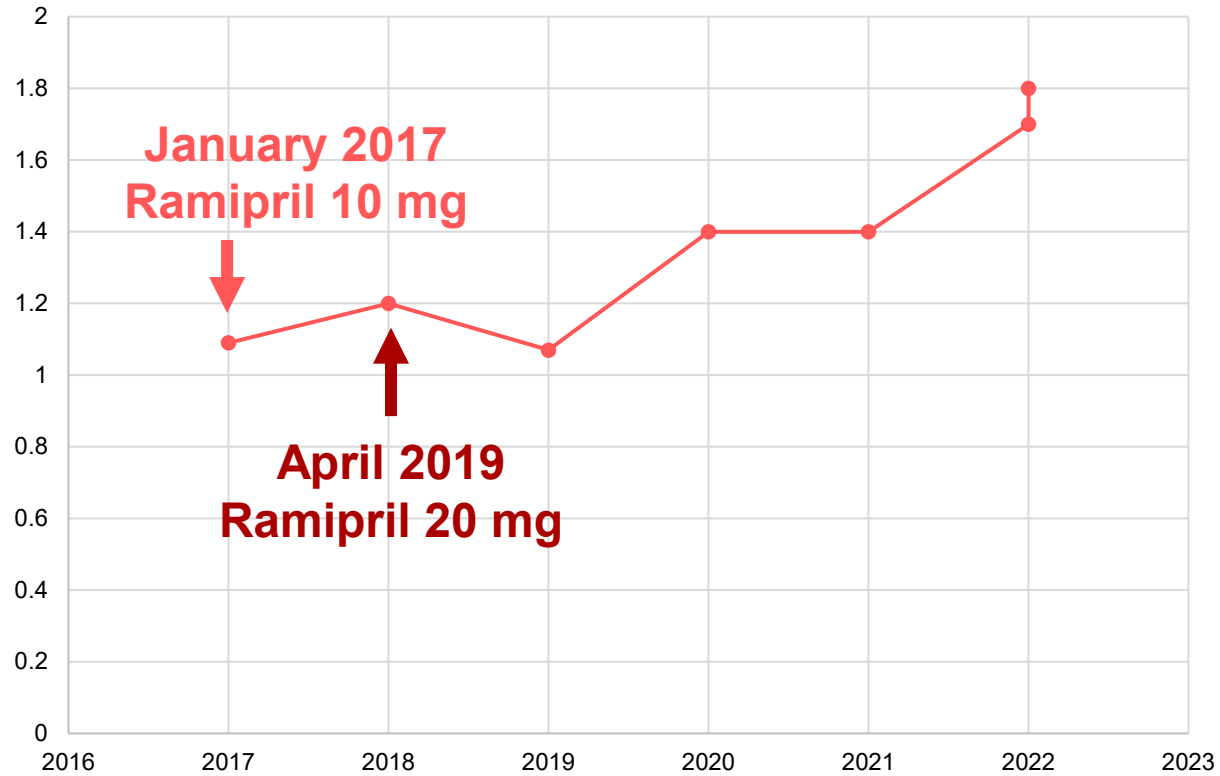
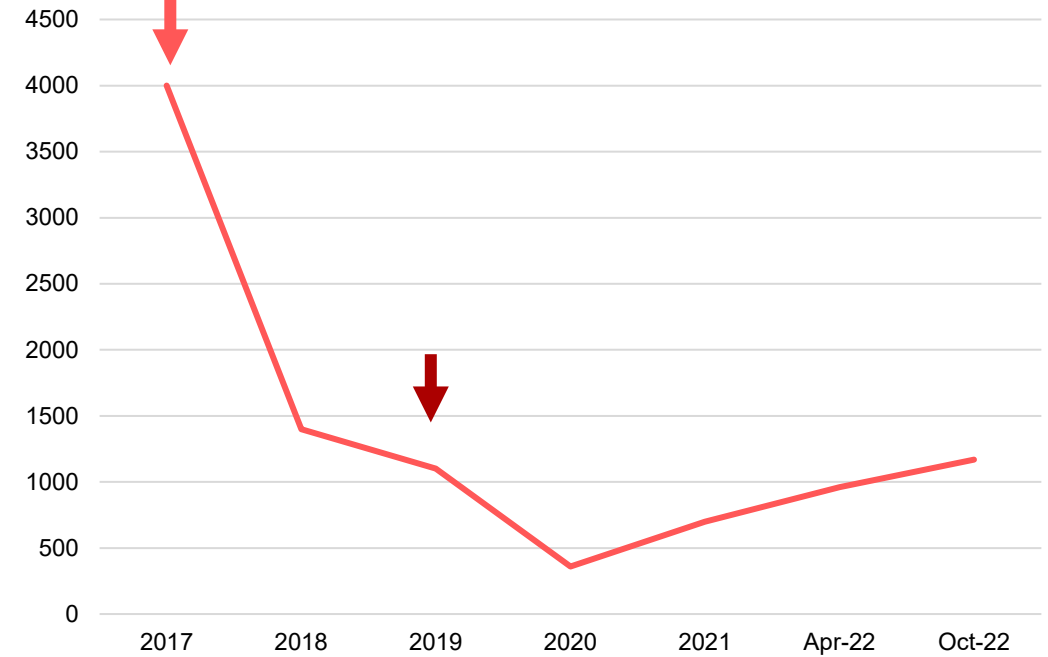


Follow-Up: 2016 – 2022

Serum creatinine mg/dL

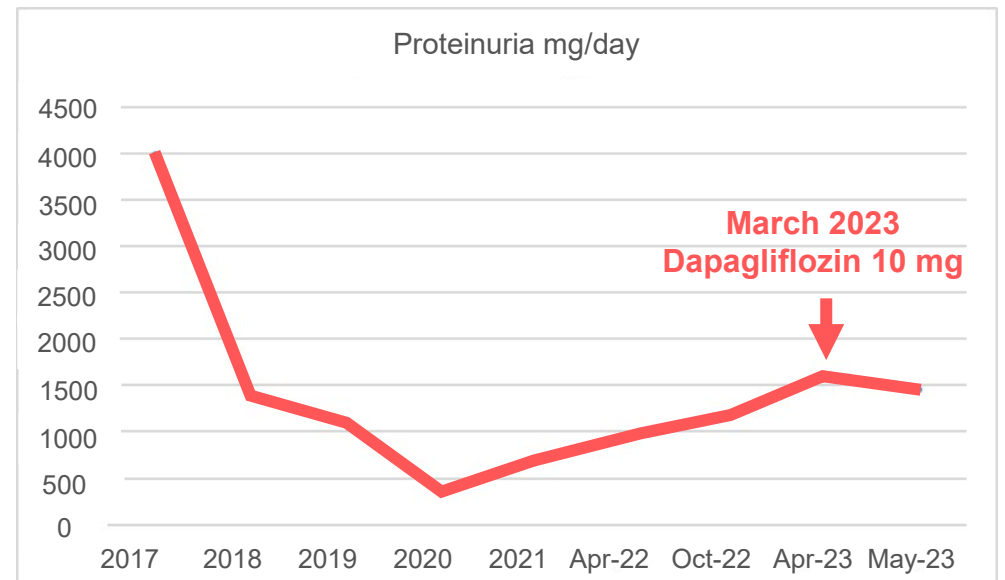
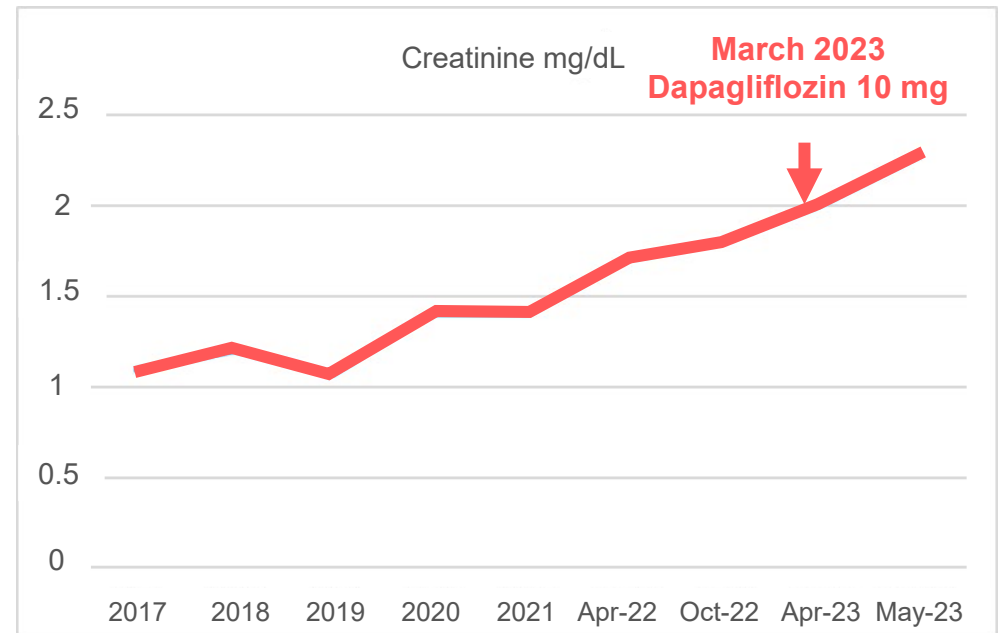


Proteinuria mg/24h



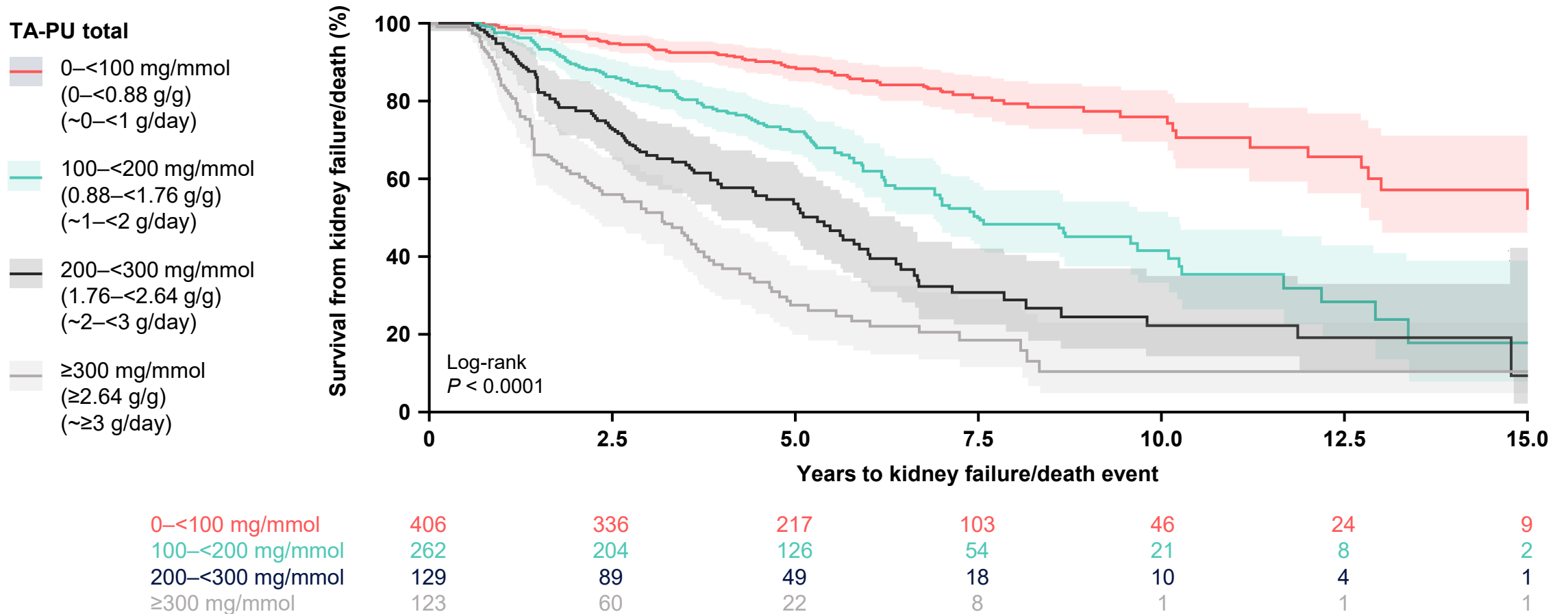
February 2023

- Serum creatinine: 2 mg/dL
- Proteinuria: 1.457 g/day
- ACE/ARBs?: Yes
- Dapagliflozin: 10 mg
- MEST scores: M1, E1, S1, T1, C0
- Corticosteroids



There Is No “Safe” Proteinuria Threshold: An Analysis of the UK National RADAR IgA Nephropathy Cohort

Development of kidney failure and mortality by severity of proteinuria*



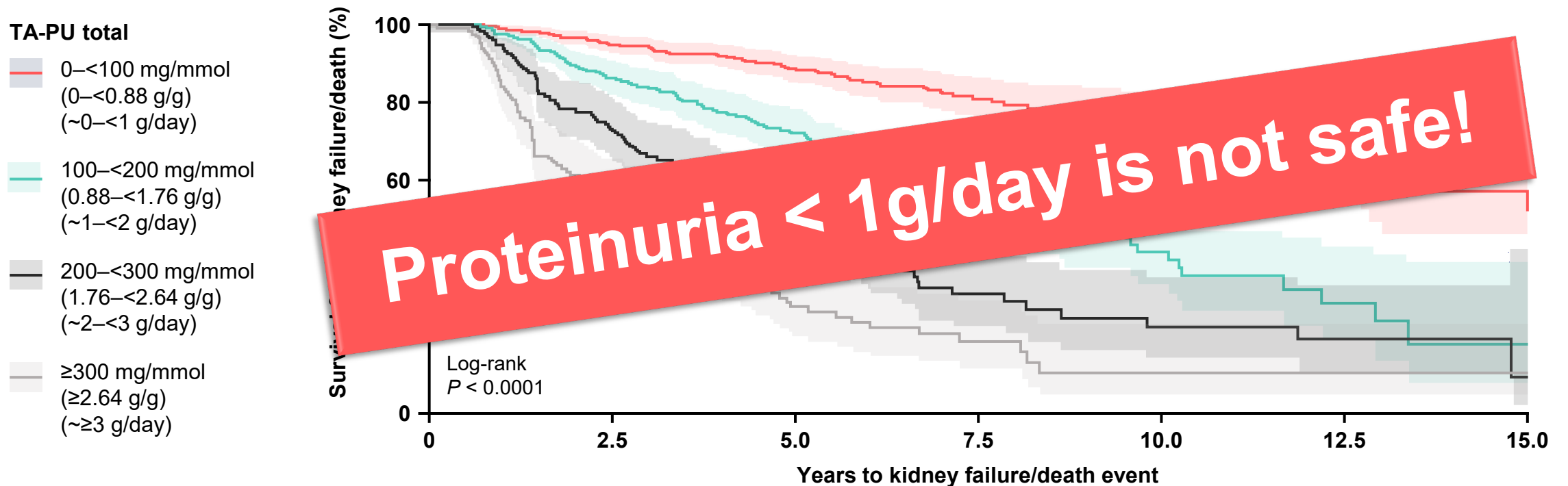
*Kaplan Meier curves for patients categorized by TA-PU. TA-PU, time-averaged proteinuria.

Pitcher D, et al. *Clin J Am Soc Nephrol.* 2023;18(6):727-738.



There Is No “Safe” Proteinuria Threshold: An Analysis of the UK National RADAR IgA Nephropathy Cohort

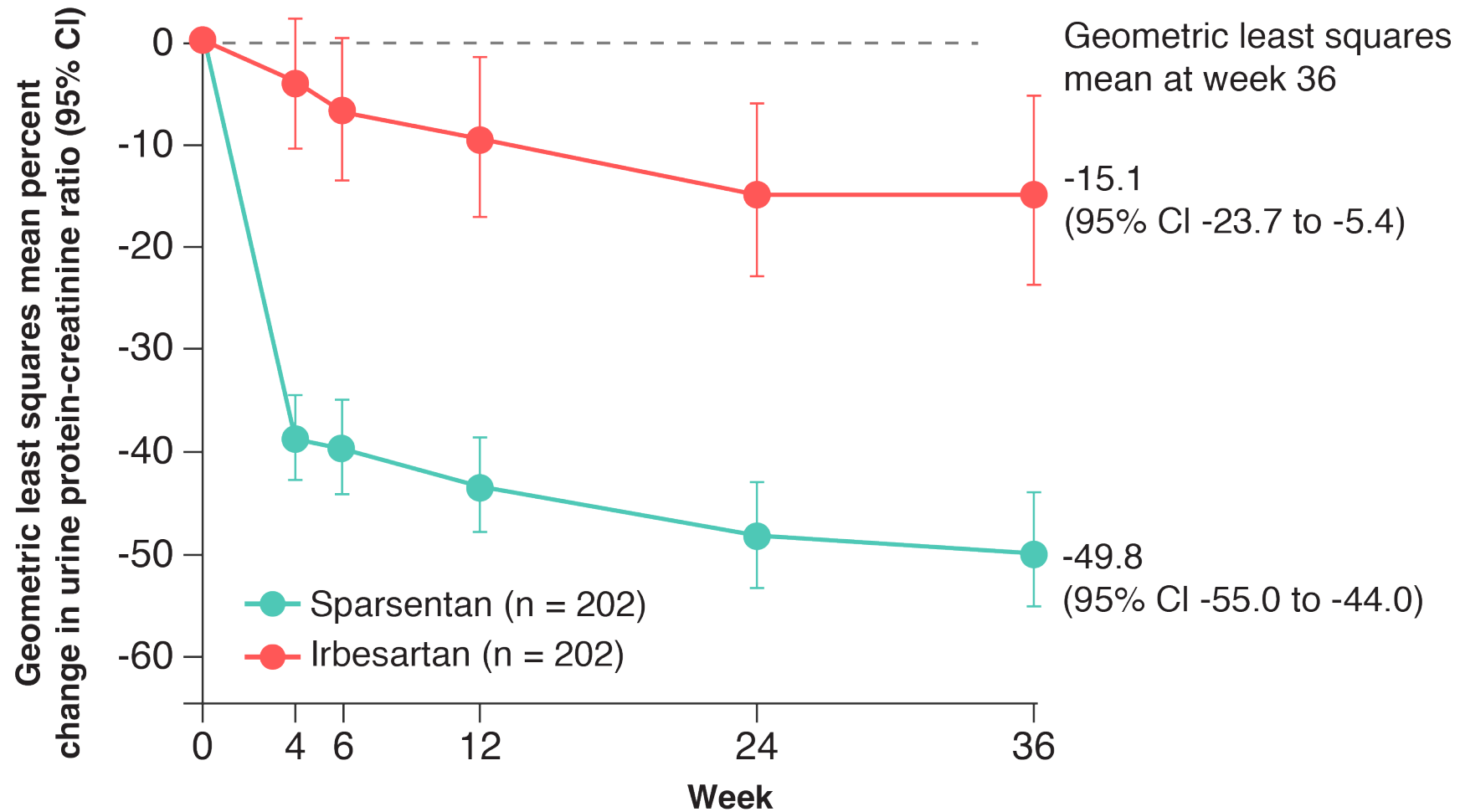
Development of kidney failure and mortality by severity of proteinuria*



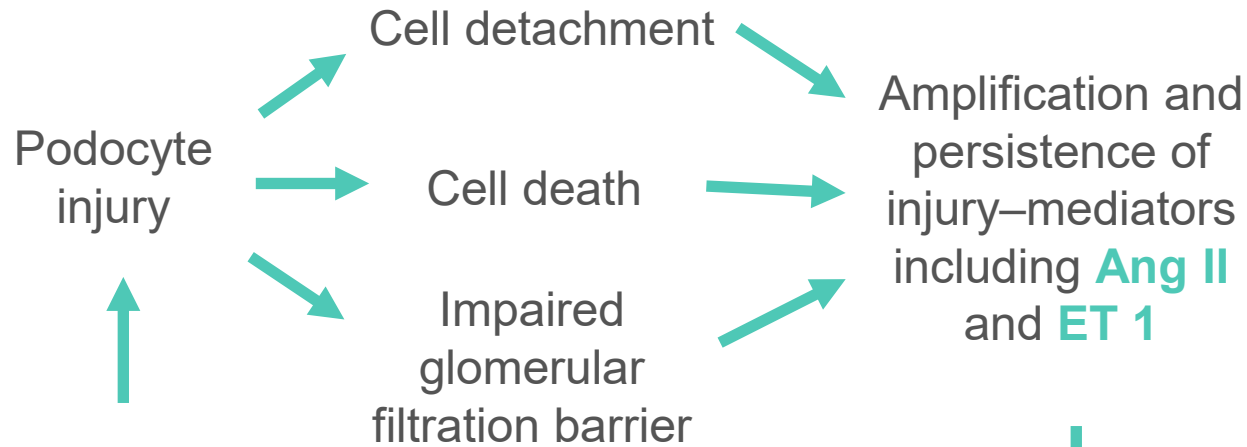
0–<100 mg/mmol	406	336	217	103	46	24	9
100–<200 mg/mmol	262	204	126	54	21	8	2
200–<300 mg/mmol	129	89	49	18	10	4	1
≥300 mg/mmol	123	60	22	8	1	1	1

*Kaplan Meier curves for patients categorized by TA-PU. TA-PU, time-averaged proteinuria. Pitcher D, et al. *Clin J Am Soc Nephrol.* 2023;18(6):727-738.

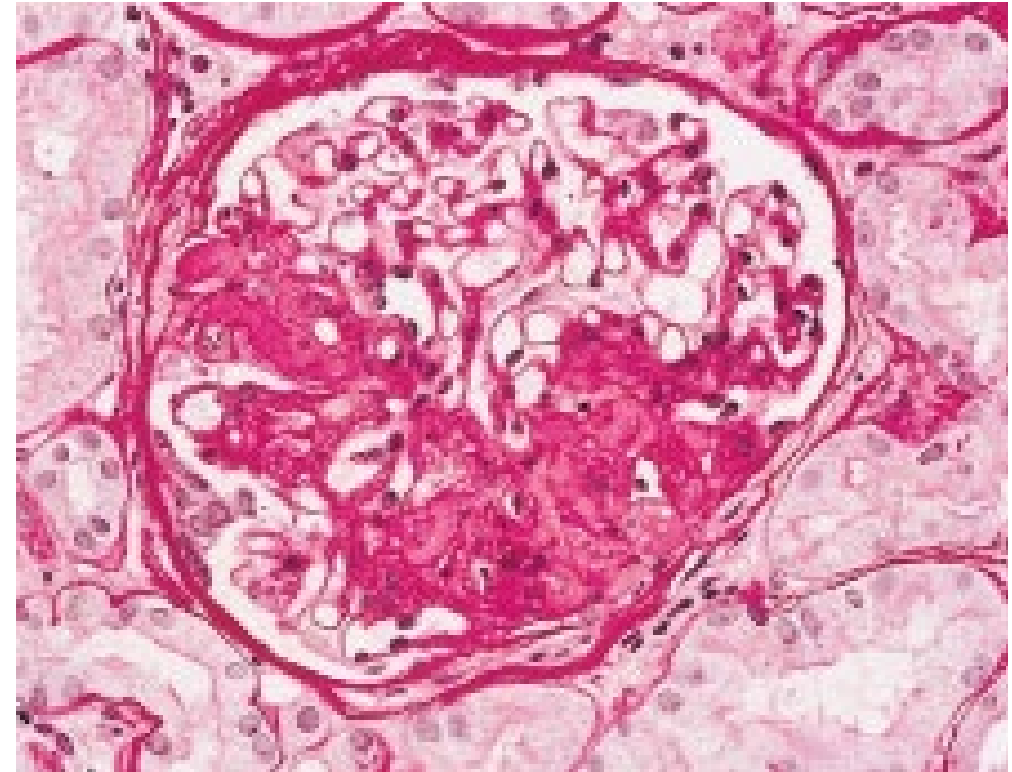
Percent Change from Baseline in UP/C by Visit



FSGS: Pathological Diagnosis



- Tuft adhesion
- PEC activation
- Loop obliteration
- Segmental sclerosis



Credit: D'Agati VD, et al. *Am J Kid Dis.* 2004;43(2):368-382.

