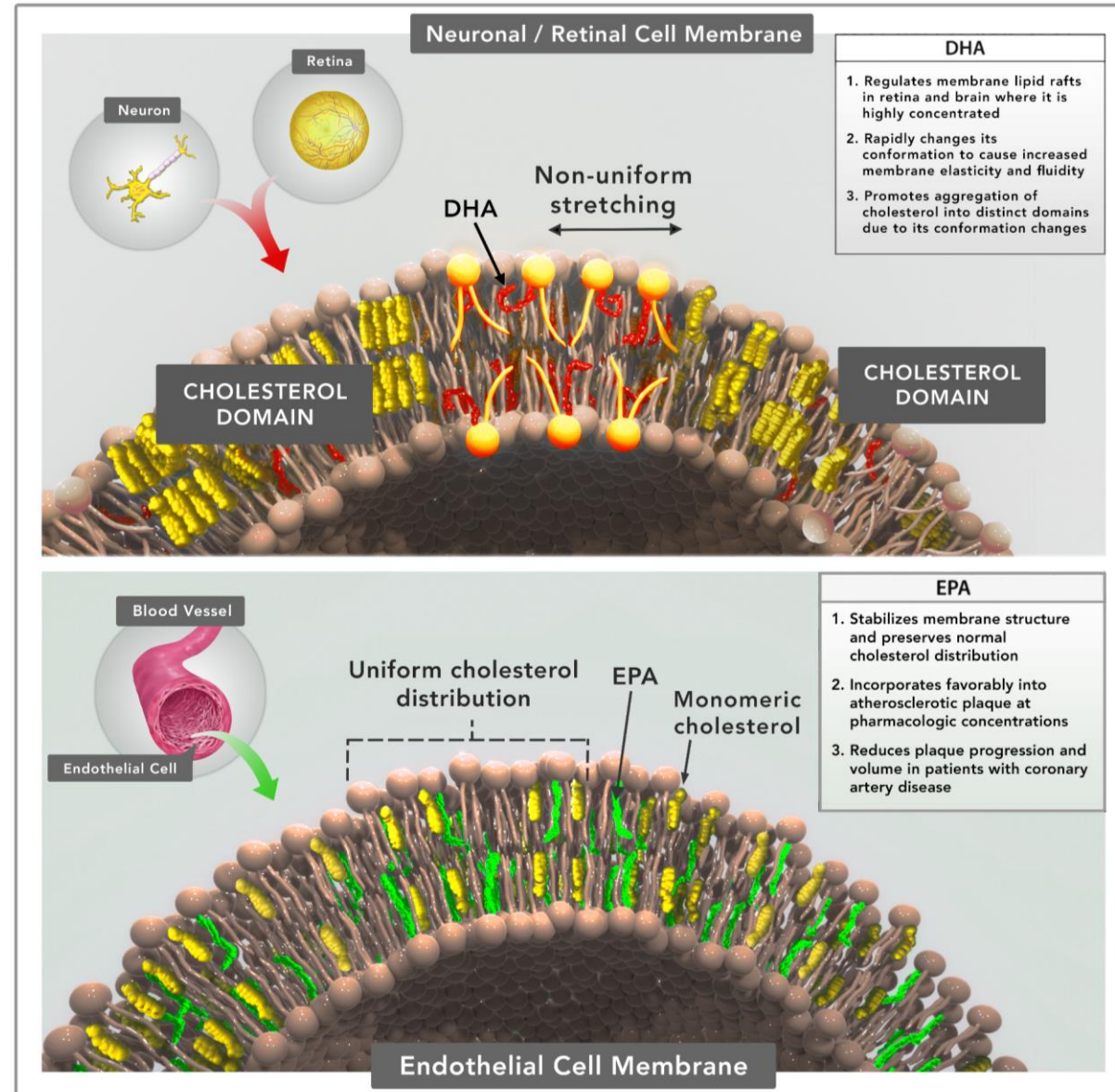


MOA Slide Resource

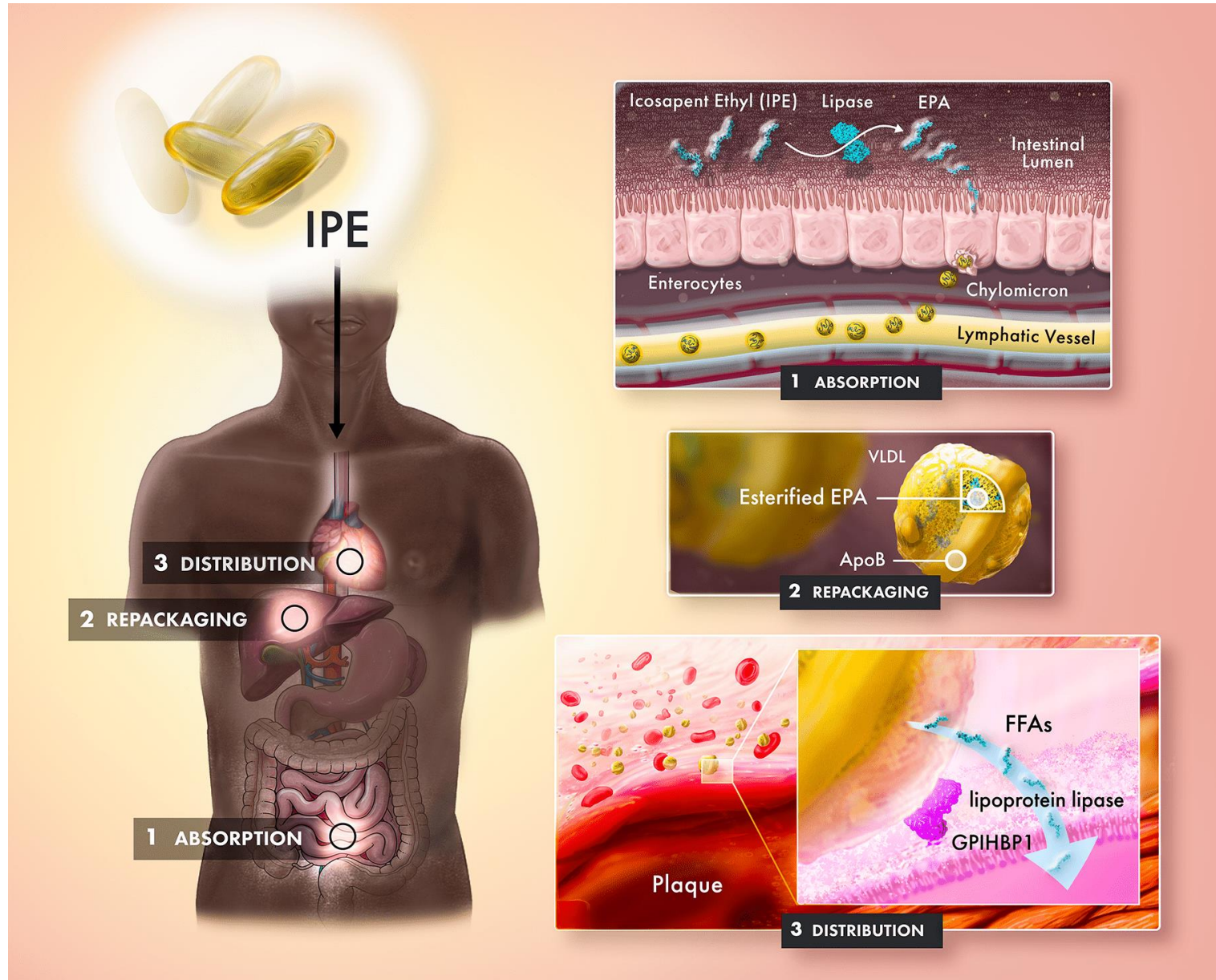
R. Preston Mason, PhD

tissue distribution and contrasting membrane effects of eicosapentaenoic acid (EPA) and docosahexaenoic acid (DHA).

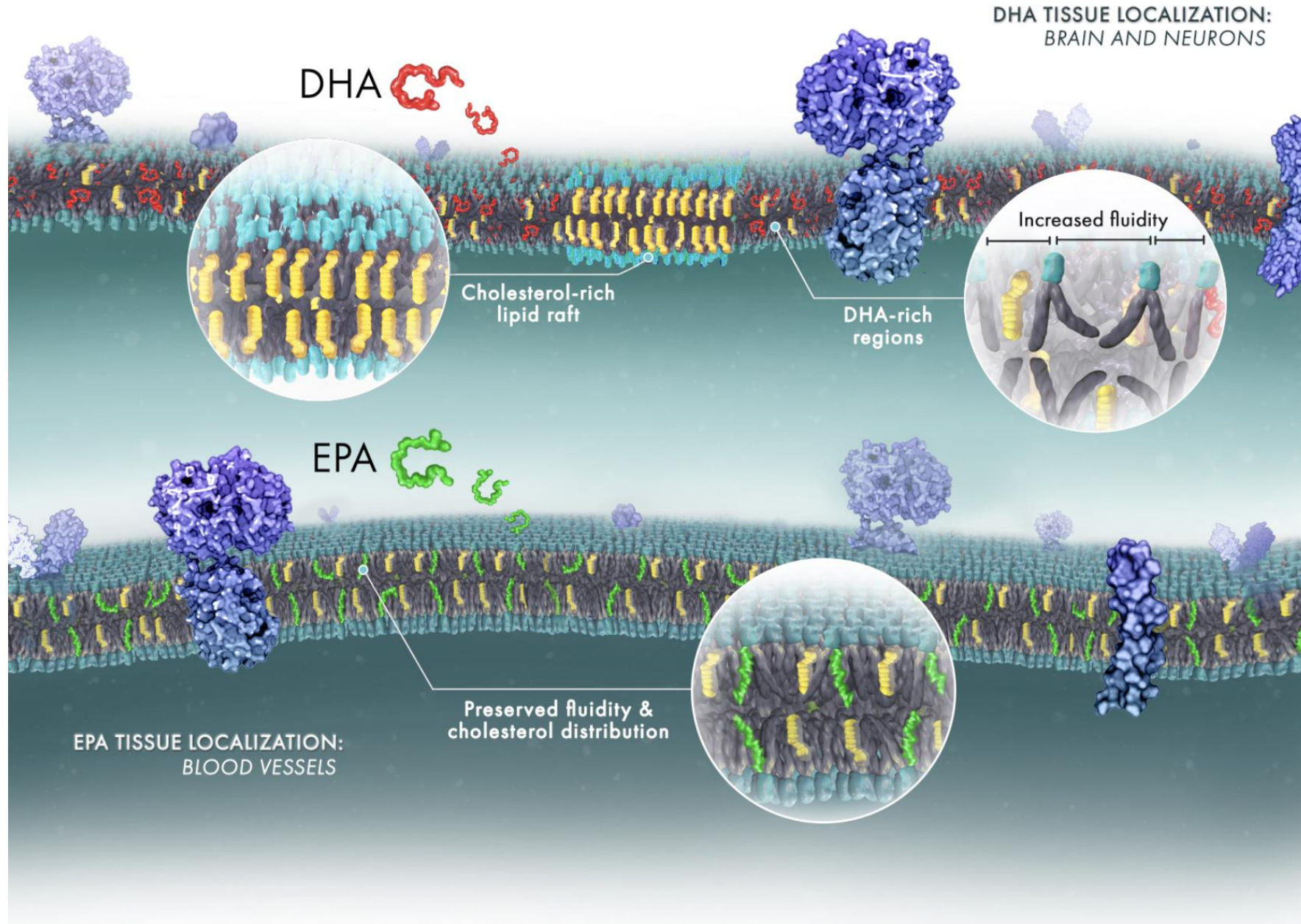
Mason P, Sherratt SCR, Eckel RH. *Metabolism - Clinical and Experimental*. 2022;130.



Icosapent ethyl (IPE) is metabolized to EPA and delivered to arterial wall plaque following oral intake.
Recently invited review to *Prostaglandins, Leukotrienes, and Essential Fatty Acids* by Sherratt SCR et al. (2022)



EPA and DHA have distinct effects of membrane dynamics and cholesterol distribution. Recently invited review to *Prostaglandins, Leukotrienes, and Essential Fatty Acids* by Sherratt SCR et al. (2022)



Endothelial nitric oxide bioavailability depends on eNOS coupling efficiency.

Recently invited review to *Prostaglandins, Leukotrienes, and Essential Fatty Acids* by Sherratt SCR et al. (2022)

