

A Kidney Diagnostic's Impact on Physician Decision-Making in Diabetic Kidney Disease.

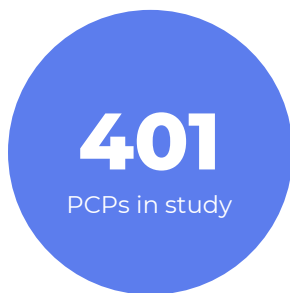
American Journal of Managed Care. 2022; 28 (12): In Press.

OBJECTIVE: Evaluate the decision-making impact of an artificial intelligence-enabled prognostic test, KidneyIntelX, in the management of diabetic kidney disease (DKD) by primary care physicians (PCPs) in the United States.

401 PCPs | 42 unique adult patient profiles

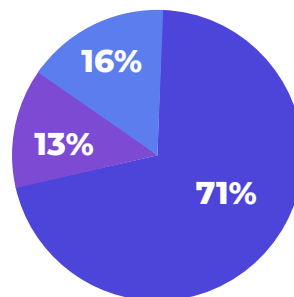
A rigorous, analytical framework with real-world scenarios

PCPs in Study



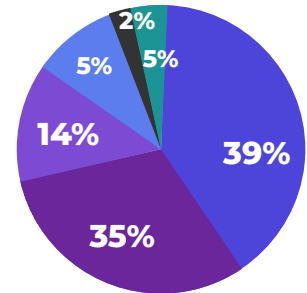
Setting of self care

Office-based private practice **71%**
Community Hospital **16%**
Academic Medical Center **13%**

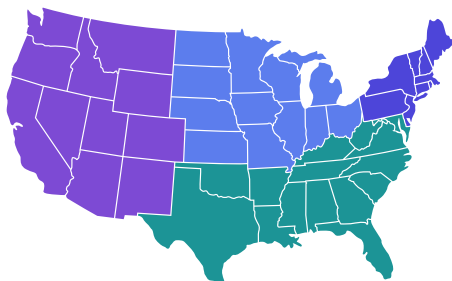


Various insurance providers

Commercial **39%** Medicare **35%**
Medicaid **14%** VA/DOD/Military **5%**
Other **2%** Self pay **5%**



Balanced geographic distribution



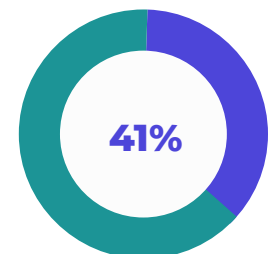
Avg. type 2 diabetes patients seen and tested in last 6 months

Seen for T2D in the past 6 months
Tested for DKD in the past 6 months

327 Seen

249 Tested

Avg. % type 2 diabetes patients with DKD per PCP



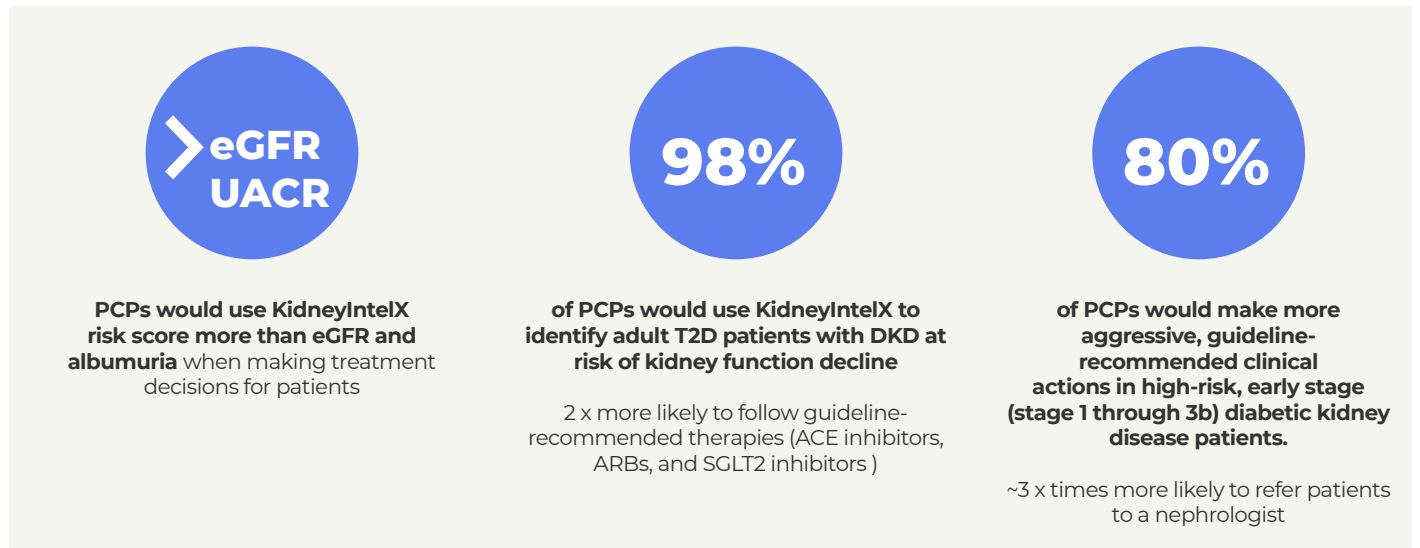
90% of PCPs dissatisfied with current methods for assessing risk of decline in kidney function (eGFR/albuminuria)

Greatest Unmet Needs:

1. Detecting DKD at early stages and predicting risk of kidney function decline
2. Treatment adherence
3. Assessing the risk of progressive decline in kidney function in higher-risk patients

Study results: KidneyIntelX leads to a behavioral shift among primary care physicians

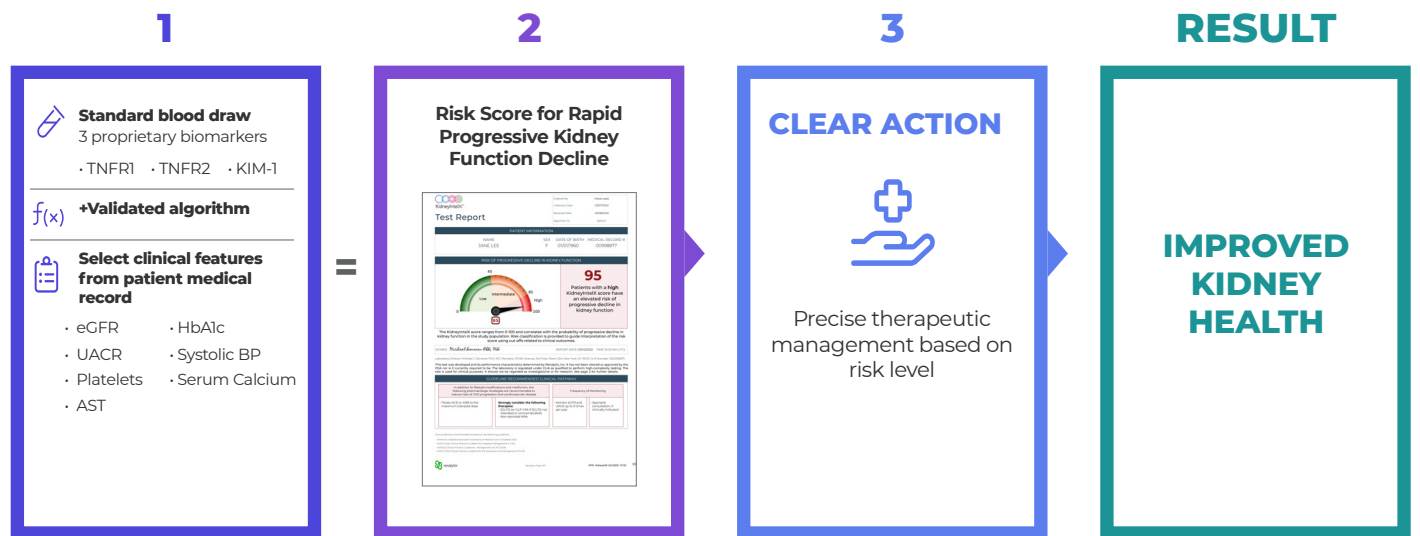
Study confirmed that:



About KidneyIntelX

KidneyIntelX is a laboratory-developed blood test that predicts the risk for progressive kidney function decline in adult patients with type 2 diabetes and chronic kidney disease (CKD) stages 1-3b

*eGFR 30-59 ml/min/1.73m² or eGFR ≥ 60 ml/min/1.73m² and UACR ≥ 30 mg/g



HPR- KidneyIntX-US-00058 09/22

To order a test:

888-203-2725 | clientservices@renalytix.com | www.kidneyintelx.com